



# GK2-BH-12 OFFICE CHAIR

## BIFMA

International authority certification

+

Experience ergonomics

NEW  
PRODUCT



## OUTSTANDING FEATURES

- BIFMA standard black high-back office chair
- Height Adjustable Cervical Headrest
- Black height adjustable lumbar support
- Height adjustable armrest, TPU soft pad design
- Seat with mould foam
- The back can be locked in the first gear by mechanism.
- Seat height adjustable by grade 4 gas lift (Lifting stroke 100MM.)
- 340# black nylon base ,static pressure bearing 1136 kg.
- 60# BIFMA 360° running nylon castors
- AT Series sandwich polyester Mesh fabric: used for both back and seat



seat height adjustment



Armrest height adjustment



Tilting Tension Adjustment



Backrest can be tilted and locked at 1 position



lumbar support height adjustment



Neck-rest height adjustment



# 2D PU ARMS

## ARMS IN BLACK

- **Height adjustable armrest**
- Color: black
- Functions: height adjustment
- Soft TPU on top

Control armrest up and down adjustment

- 1.Height adjustable arms, with soft touch PU pad
- 2.No sudden and major change in the structural integrity when 68 kg applied for 1 min.



# Height adjustable headrest



## Neck-rest height adjustment

It can be adjusted according to the height and neck position of the user, which is comfortable and convenient



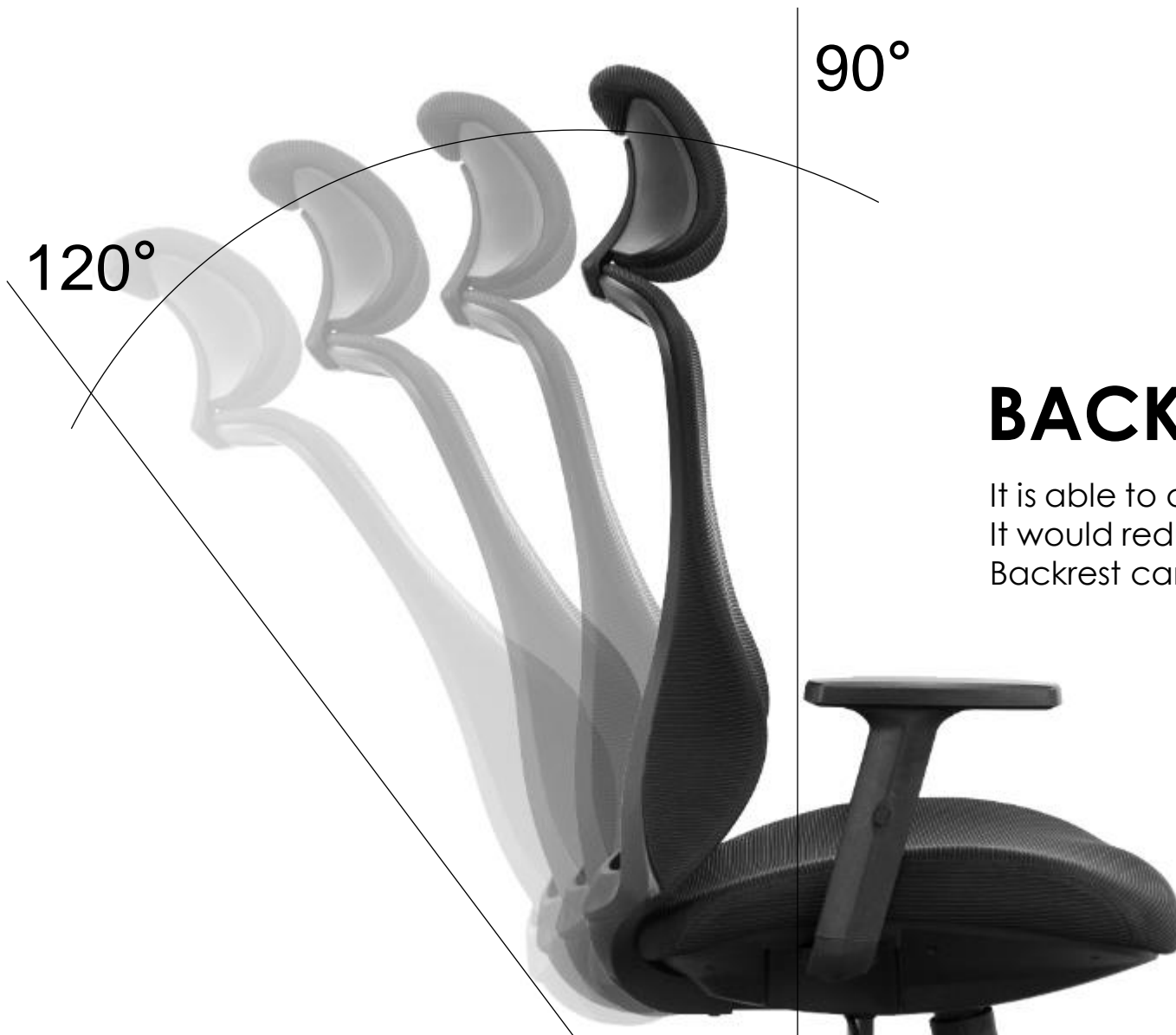


## LUMBAR SUPPORT HEIGHT ADJUSTABLE

The lumbar support can be adjusted for height, It's offering comfort to user.







## BACKREST TILTING DEGREE

It is able to offer good sitting feelings to users.  
It would reduce stress to abdomen.  
Backrest can tilt in 1 position.

## SHS CLASS 4 GAS LIFT (TOP CLASS IN THE WORLD)

International authority testing and certification



**SGS**

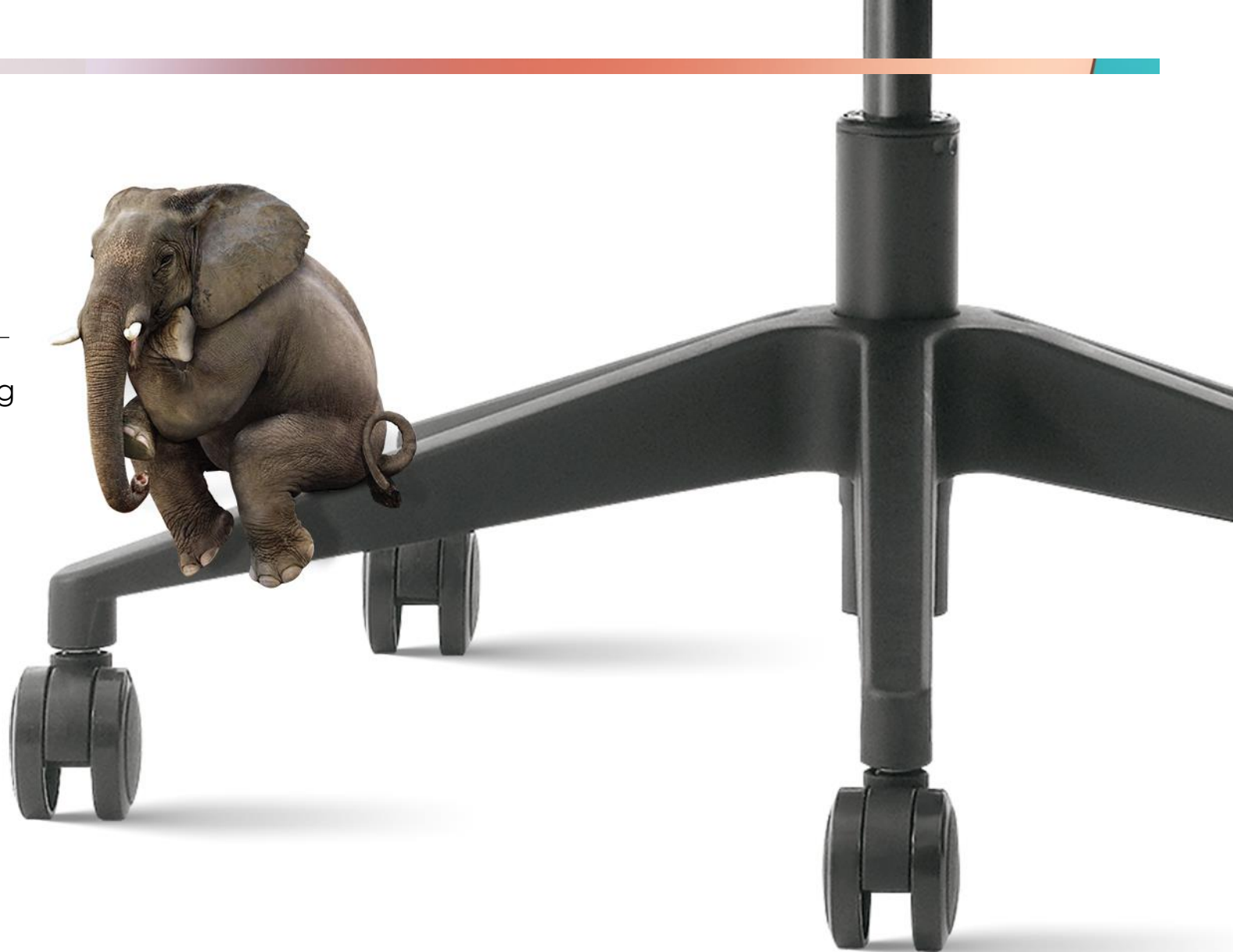
1. Class 4 gas lift from Korean Samhongsan company
2. The wall thickness is 2.5 mm
3. With QPQ treated surface, this makes gas lift more strong than class 2 and class 3 gas lift.
4. Nitrogen purity is 99.7%, trust-worthy quality.

# 340 NYLON BASE IN BLACK

BIFMA standard test, high-strength load-bearing

**340** mm  
Size

**1136** kg  
Load capacity



\*The pictures only show creative ideas, the specific data shall prevail



# 60 MM NYLON CASTORS

With the BIFMA test of 100,000 cycles when load 113 kg.

# 100000 TIMES TEST



# There is no loss for the structure when load 150 kg after 1,000 cycles with obstacle.

# MOLDED FOAM FOR SEAT

Molded foam seat, it's durable and comfortable, it won't out of shape for 5 years.



12mm~13mm

The thickness of plywood board is 12 mm~13mm, this thick of plywood can make the chair more durable.

\* Pass the fire retardant standard of CA TB117-2013



## SPONGE ELASTICITY

Inelastic      Moderate      Strong elasticity

## SPONGE TOUCH

soft      Moderate      Hard

## SPONGE THICKNESS

Thicken      Moderate      Thin

Density: 55KG/M<sup>3</sup>



# CERTIFICATE DISPLAY

Obtained various inspection and evaluation certifications through professional institutions.  
We only deliver healthy and comfortable office chairs.





The unique frame of the chair ensures contact is maintained with your lower back in a normal curvature to help your back stay strong and healthy, and the adjustable lumbar support to ensure that the fit is right for users of all heights and shapes.

+

Experience ergonomics

NEW  
PRODUCT



# GK2-BH-12 OFFICE CHAIR

**BIFMA**

International authority certification